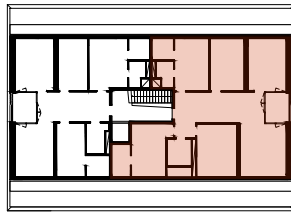
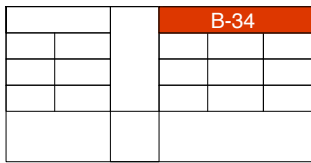


PEC2, APPARTEMENT B-34, 5.5-PIECES

Chemin du Château, 1023 Crissier



SURFACE HABITABLE env. 128m²

ETAGE Combles

LOGGIA env. 6m²



NB: LES DIMENSIONS SONT APPROXIMATIVES
MOBILIER NON-COMPRIS, ÎLOT DE CUISINE NON-COMPRIS
DOCUMENT NON-CONTRACTUEL

