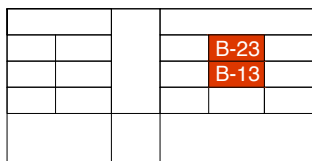


PEC2, APPARTEMENT B-13, B-23, 3.5-PIECES

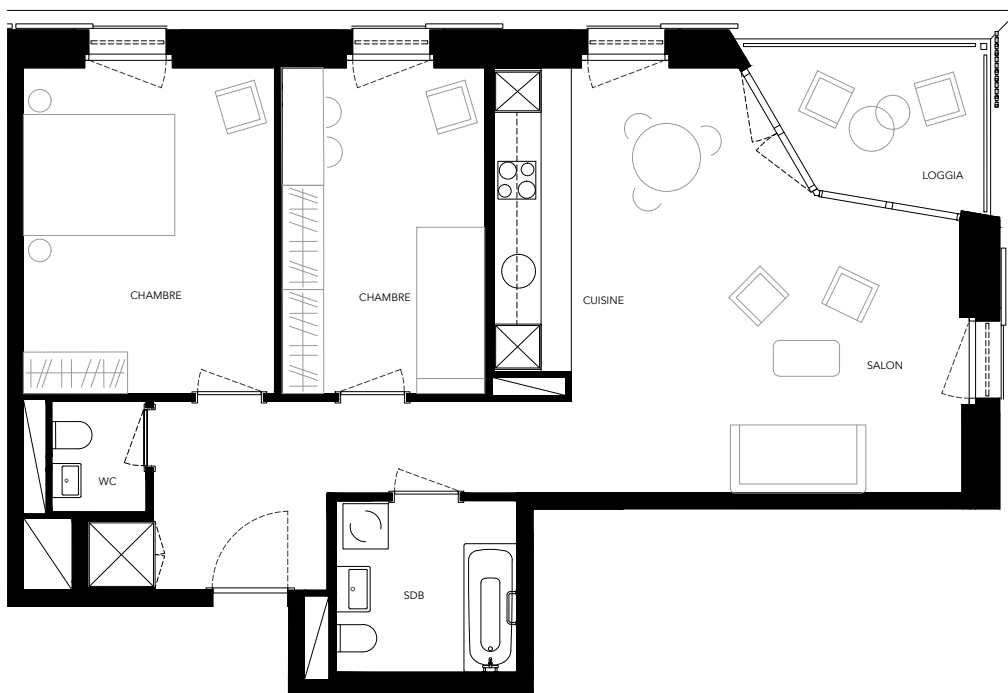
Chemin du Château, 1023 Crissier



SURFACE HABITABLE env. 73.5m²

ETAGE 1er/2ème

LOGGIA env. 6m²



NB: LES DIMENSIONS SONT APPROXIMATIVES
MOBILIER NON-COMPRIS
DOCUMENT NON-CONTRACTUEL

