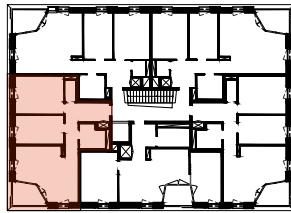


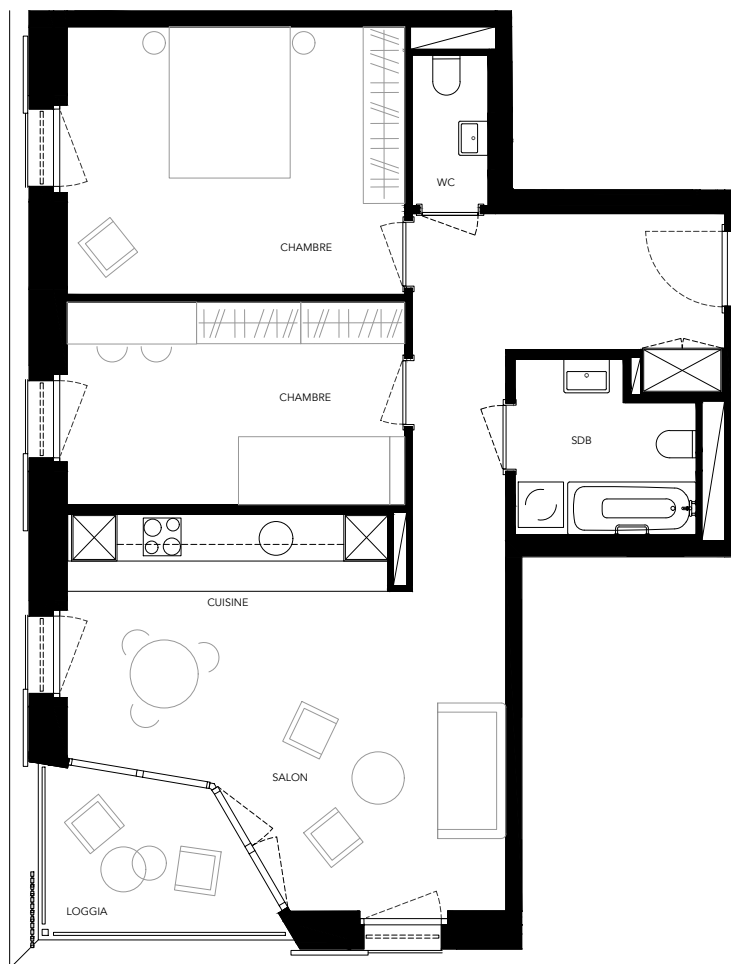
PEC2, APPARTEMENT B-11, B-21, 3.5-PIECES

Chemin du Château, 1023 Crissier

B-21					
B-11					



SURFACE HABITABLE env. 72m²
ETAGE 1er/2ème
LOGGIA env. 6m²



NB: LES DIMENSIONS SONT APPROXIMATIVES
MOBILIER NON-COMPRIS
DOCUMENT NON-CONTRACTUEL

