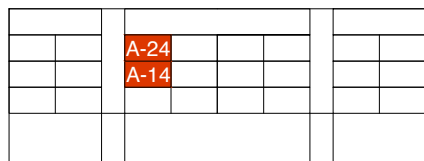


PEC3, APPARTEMENTS A-14, A-24, 2.5-PIECES

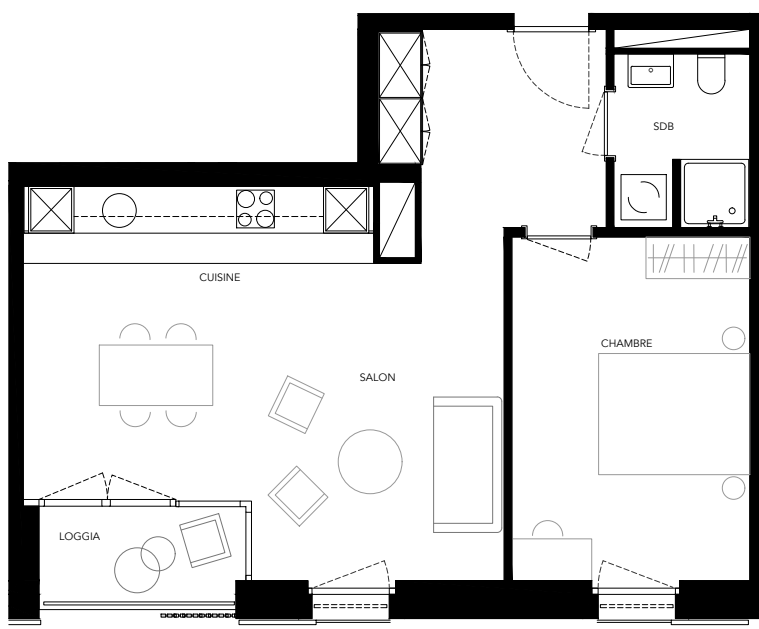
Chemin du Château, 1023 Crissier



SURFACE HABITABLE env. 55.5m²

ETAGE 1er/2ème

LOGGIA env. 4m²



NB: LES DIMENSIONS SONT APPROXIMATIVES
MOBILIER NON-COMPRIS
DOCUMENT NON-CONTRACTUEL

